



**GREEN SPACE/PARK COMMITTEE
MEETING MINUTES**

DATE: February 5, 2020

IN ATTENDANCE:

**Doug Dresie
Mark Cann
Dan Newyear**

**George Carpenter
Michelle Balside
Shain Walden**

**Lori Wilson
Randy Page
Trenton Pinick**

**Pat Hogan
Darlene Page**

	Park Improvements
1.1	<p>Boy Scout Eagle Projects:</p> <ul style="list-style-type: none"> Shain Walden presented a model of the benches he intends to build on the hiking trails at the main park. He intends to install 3 total. The next steps are for him to fundraise. He intends to install in the spring months. Shain is to notify Doug Dresie when he plans to work, so that the Township can be notified. Trenton Pinick presented his plan to repair the fall line trail at the Nature Park. Randy Page is the sponsor for this project. Trenton plans to complete his project in early spring. Trenton is to advise Randy or Doug when he plans to work so that the Township can be notified.
1.2	<p>Learning Center Update:</p> <p>The grant funds have been extended to the end of the year. The project is in the re-bidding stage. Formal solicitations will be in the paper on February 6, 2020, with bids due on March 4, 2020. The construction time frame has been extended as well. There has been outreach to contractors who recently bid on Clermont County Park shelter projects. Some potential scope reduction opportunities are reducing the number of manholes for the sewer line, and the roof material may change as well.</p>
1.3	<p>Safety Improvements (OKI Grant):</p> <p>The County is managing this project. It should be out for bid, but, the committee is unaware of the bid date. Completion of the project is around October 2020.</p>
1.3	<p>History Trail Ideas:</p> <ul style="list-style-type: none"> Next step will be to get a prototype sign made. We may be able to engage Distinctive Signs for the artwork. Michelle indicated that there is some Amelia historical information at the building at 119 Main Street. We should inquire with the Township regarding the potential for a tour to potentially gather information.

	Dog Park Updates
2.1	<p>2020 Fundraising:</p> <ul style="list-style-type: none"> February Event: City BBQ 2/19/2020, all day. 25% of the sales go to the Dog Park. Guests must present the flyer for the event. Freddy's January Event: Freddy's contributed \$127 which included the Pupkin Parade as well as the January event. Dog Park T-Shirt Fundraiser: The group discussed the possibility of this fundraiser. Lori can get printed T-shirts through her employer for \$5 each. They could be sold for \$20. Potential marketing would be through Facebook, and at Park events such as the Easter Egg Hunt and the 4th of July Parade. This may require significant up-front costs that need to be considered. The group discussed really needing to get local businesses involved for sponsoring. There are now more targets with the dissolution of Amelia. We need to get a list of potential businesses to target.

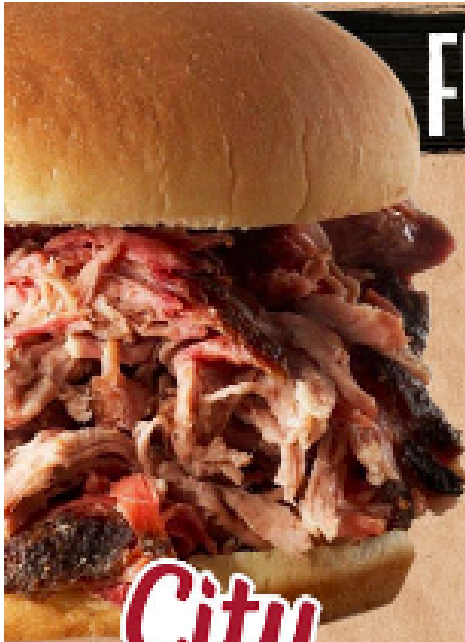
2.2	<p>Donations Received</p> <ul style="list-style-type: none"> • Pet Waste Station was donated by Kathryn Scott. • Fundraising now stands at \$11,209.00.
-----	---

Other Business	
3.1	<p>Spring Parks Newsletter: Target date is to publish by March 11, 2020</p> <ul style="list-style-type: none"> • Randy met with Jim Willison of the Moscow Monarchs, and they are planning on starting a traveling team called the “Oaks of Locust Corner.” They still intend to use Pierce Ballfields; although construction may impact that. Randy will ask Jim to write an article about vintage baseball. • There will be an article updating the projects. We will have Learning Center bids prior to the newsletter. • The Work Day scheduled for March 28 needs to be featured. • We also need to include information on the Easter Egg Hunt.
3.2	<p>Clermont County Parks Alliance Workshop: Lori attended the workshop on grants. She received a comprehensive list of grant opportunities for Parks. Lori also noted that they are recruiting people to get involved in the Parks Alliance. Randy and Darlene have most recently attended representing Pierce Township.</p>
3.3	<p>March 28, 2020 Work Day:</p> <ul style="list-style-type: none"> • Invasive removal will focus at the Nature Park this Spring. We may also have a Boy Scout crew work at Groh Park on invasives the same day. • It was also discussed that we should recruit the Master Gardener Club to plant flowers (purchased by the Township) in May.

NEXT MEETING: WEDNESDAY, March 4, 2020, 6:30pm

Minutes prepared by: Doug Dresie

BE SURE TO SHOW THIS
FLYER TO YOUR CASHIER



City
BARBECUE

FUNDRAISER!

**We get
25%
back!**



Fundraiser A

Scan barcode or show to cashier!

878 EASTGATE N. DR, CINCINNATI, OH 45245

Pierce Township Off-leash Dog Park

FUNDRAISER
Feb. 19, 2020
10:30am - 10pm



www.piercetownship.com



Trail funding Sources

New Ref. #	Funding Name	Issuing Agency	Feasib, Plan	Design, Eng	ROW, Land	Construction	Maint.	other	Project Eligibility	Website Link	Eligible Applicants	Typical Maximum Award	Local Match	Application Cycle	Notes
1	National Creative Placemaking Fund	ArtPlace							\$10.5 million is available to fund projects that work with artists and arts organizations to help build stronger, healthier communities anywhere in the U.S	http://www.artplaceamerica.org/blog/national-creative-placemaking-fund-accepting-project-proposals					
2	Local Permissive Licenses Plate Fees	City or Village							<ul style="list-style-type: none"> • Bicycle lanes on roadway • Paved Shoulders • Trail/highway intersection • Sidewalks, new or retrofit • Crosswalks, new or retrofit • Signal improvements • Curb cuts and ramps • Traffic calming • All improvements must be made in conjunction with roadway and is included in the original project scope 	http://codes.ohio.gov/orc/4504	City, Village			Annual per Local Budget	
3	County Permissive License Plate Fees	County							<ul style="list-style-type: none"> • Bicycle lanes on roadway • Paved Shoulders • Trail/highway intersection • Sidewalks, new or retrofit • Crosswalks, new or retrofit • Signal improvements • Curb cuts and ramps • Traffic calming • All improvements must be made in conjunction with roadway and is included in the original project scope 	http://publicworks.cuyahogacounty.us/en-US/Project-Planning-Funding.aspx	County, City, Village, Township		0% - 50%	Varies	
4	County Surface Transportation Program (CSTP)	County Engineers Association		X		X			<ul style="list-style-type: none"> • Bicycle lanes on roadway • Paved Shoulders • Signed bike route • Shared use path/trail • Spot improvement program • Bike racks on buses • Bicycle parking facilities • Trail/highway intersection • Bicycle storage/service center • Sidewalks, new or retrofit • Crosswalks, new or retrofit • Signal improvements • Curb cuts and ramps • Traffic calming 	http://publicworks.cuyahogacounty.us/en-US/Project-Planning-Funding.aspx	County			20% Annual application period	
5	County Bridge Program	County Engineers Association							Bike and Pedestrian Facilities that are appurtenances to the bridge project itself . Funds the replacement of county bridges.	http://publicworks.cuyahogacounty.us/en-US/Project-Planning-Funding.aspx	Counties			20% Annual Application Period:	
6	Federal Lands Access Program - NOTE from FHWA - We are in the process of revising the information on this page to address , the Fixing America's Surface Transportation (FAST) Act of 2015.	FHWA							to improve transportation facilities (incl. bike/ped) that are located on, adjacent to, or provides access to federal lands. The transportation facility must be owned and/or maintained by a state, county municipality, and not a federal land agency .						
7	Federal Transit Administration	FTA/ODOT				X	X		Bike and Pedestrian Facilities that are appurtenances to the transit project itself	http://www.fta.dot.gov/grants/12305.html		Varies by program	Varies	Varies by program	Designated recipients
8	The Mobilization for Health: National Prevention Partnership Awards (NPPA) Program	HHS							Promote and accelerate partnerships, catalyze collaborations in improving health through access to preventive services across the United States. The program is designed to establish integrated, collaborative local, state, regional, or tribal partnerships to increase community awareness and action on preventive health services, promote health and wellness, educate and train, establish communication programs to community populations, regardless of social, economic barriers, race or ethnicity. Department of Health and Human Services, Office of the Assistant Secretary for Health	http://www.hhs.gov/ash/index.html	Any public or private entity located in a State		0%	Application cycles vary based on fund availability.	

TOI INTERMEDIATE... A-DORU... DUKK (NEED 1...)

Trail funding Sources

New Ref. #	Funding Name	Issuing Agency	Feasib, Plan	Design, Eng	ROW, Land	Construction	Maint.	other	Project Eligibility	Website Link	Eligible Applicants	Typical Maximum Award	Local Match	Application Cycle	Notes
9	Community Development Block Grant	HUD				X			<ul style="list-style-type: none"> Public facilities Street Surface, repair or replacement Sidewalks, new or retrofit Crosswalks, new or retrofit Street Lights, repair or retrofit Traffic/Pedestrian Signals, repair or retrofit Barrier removal for handicap accessibility (e.g., sidewalks, curb ramps) Street Furniture 	http://development.cuyahogacounty.us/en-US/municipal-grants.aspx	Urban County Community areas that meet HUD Objectives.		Varies by program This program can be used as a local match for the TA, SRTS, STP and CMAQ programs provided they meet both program eligibility categories.	Annual Application Period: Due in Fall	
10	Transportation Alternatives Program (TAP)	OKI	X	X		X			<ul style="list-style-type: none"> Bicycle lanes on roadway Bicycle parking facilities Bicycle storage/service center Sidewalks, new or retrofit Crosswalks, new or retrofit Paved Shoulders Signed bike route Traffic calming Shared Use Path Construction that can include recreational trails provided they also have transportation component	http://www.oki.org/transportation-planning/funding-opportunities/	County, City, Village, Township, and park districts		20%	Quarterly Application Period	
11	Surface Transportation Program (STP)	OKI				X	X		<ul style="list-style-type: none"> Bicycle lanes on roadway Paved Shoulders Signed bike route Shared use path/trail Spot improvement program Bike racks on buses Bicycle parking facilities Trail/highway intersection Bicycle storage/service center Sidewalks, new or retrofit Crosswalks, new or retrofit Signal improvements Curb cuts and ramps Traffic calming 	http://www.oki.org/transportation-planning/funding-opportunities/	County, City, Village, Township		20%	Applications due on a quarterly basis	
12	TLCI Program	People for Bikes and Bike Industry Partners	X												
13	Congestion Mitigation Air Quality (CMAQ)	OKI		X		X	X		<ul style="list-style-type: none"> Bicycle lanes on roadway Signed bike route Shared use path/trail Spot improvement program Bike racks on buses Bicycle parking facilities Trail/highway intersection Bicycle storage/service center Sidewalks, new or retrofit Crosswalks, new or retrofit Signal improvements Curb cuts and ramps Non-construction outreach related to safe bicycle use 	http://www.oki.org/transportation-planning/funding-opportunities/	County, City, Village, Township		20%	Application Cycles To Be Determined	Political subdivisions within the MPO's Geography
15	ODNR Land and Water Conservation Fund	ODNR		X		X			Acquisition, development, and rehabilitation of recreational areas	http://ohiodnr.com/tabid/10762/default.aspx		Available funds vary yearly by county	50%	February	Federal money is administered by the state in cooperation with the National Park Service. The applicant must own the property; leased property is ineligible.
16	ODNR Natureworks Grants	ODNR		X	X	X			Acquisition, development, and rehabilitation of recreational areas	http://ohiodnr.com/tabid/10762/default.aspx		Available funds vary yearly by county	25%	February	The agency must have proper control (title or at least a 15- year non-revocable lease) to be eligible for a development or rehabilitation grant. Funded through Ohio Parks & Natural Resources Bond Issue which was approved by Ohio voters in November 1993. Project scope must be either development or acquisition but not both.
17	ODNR Recreational Trails Program	ODNR	X	X		X	X		Includes development of urban trail linkages, trailhead & trailside facilities, acquisition of easements & property, development and construction of new trails	http://ohiodnr.com/tabid/10762/default.aspx		Varies annually	20%	February	Can submit the same application for this program and the Clean Ohio Trails program; no need to fill out 2 separate applications.

Trail funding Sources

New Ref. #	Funding Name	Issuing Agency	Feasib, Plan	Design, Eng	ROW, Land	Construction	Maint.	other	Project Eligibility	Website Link	Eligible Applicants	Typical Maximum Award	Local Match	Application Cycle	Notes
18	ODNR Land and Water Conservation Fund	ODNR							Acquisition, development, and rehabilitation of recreational areas	http://ohiodnr.com/tabid/10762/default.aspx		Available funds vary yearly by county	50%	February	Federal money is administered by the state in cooperation with the National Park Service. The applicant must own the property; leased property is ineligible.
20	Clean Ohio Trails Fund	ODNR	X	X	X	X			Improve outdoor recreational opportunities by funding trails for outdoor pursuits; Land acquisition for a trail, trail development, trailhead facilities, engineering and design	http://clean.ohio.gov/RecreationalTrails/		Varies annually	25%	February	All projects must be completed within 15 months from the date that they are signed into contract.
21	Ohio State Infrastructure Bank (SIB)	ODOT							THE SIB funds highway, rail, transit, intermodal, and other transportation facilities and projects which produce revenue to amortize debt while contributing to the connectivity of Ohio's transportation system	http://www.dot.state.oh.us/Divisions/Finance/Pages/StateInfrastructureBank.aspx	any public entity such as political subdivisions, state agencies, boards, or commissions, regional			Transportation Infrastructure Bond Fund Program and Revolving loan program	
22	Safe Routes to School Program (SRTS)	ODOT							• Bicycle lanes on roadway • Bike racks on buses • Bicycle parking facilities • Bicycle storage/service center • Sidewalks, new or retrofit • Crosswalks, new or retrofit • Paved Shoulders • Signed bike route • Traffic calming • Shared Use Path Construction that can include recreational trails provided they also serve a transportation component • Safe Routes to School projects that are within	http://www.dot.state.oh.us/Divisions/Planning/LocalPrograms/Pages/TransportationAlternatives.aspx www.dot.state.oh.us/saferoutes	County, City, Village, Township		0%	Application cycles vary based on fund availability.	
23	Municipal Bridge Program	ODOT				X			Bike and Pedestrian Facilities that are appurtenances to the bridge project itself . Funds the replacement of local bridges.				20%	Annual Application Period: Due in March	
24	Safety Program	ODOT District Office							• Bike and Pedestrian Facilities in Bike/Ped High Crash Areas • Bike and Pedestrian Facilities that are appurtenances to the roadway project itself • Environment and safety education programs	http://www.dot.state.oh.us/Divisions/Planning/SPPM/SystemsPlanning/Pages/FundingGuidelines.aspx	County, City, Village, Township		10-20%	Biannual Application Period: due by April 30 and September 30	link doesn't work
25	Section 402 Federal, State, and Community Highway Safety Funds	ODPS				X			• Maps • Safety/education position • Police patrol • Helmet promotion • Safety brochure/book • Training	http://publicsafety.ohio.gov/grants.stm		Varies by program	0%	July of each year	of education, healthCounty, city, township, village, law enforcement agency, board department, metropolitan planning organization, etc.); state agency; or non-profit organization, church, hospital, educational service center, college or university
26	Ohio EPA Water Resource Restoration Sponsor Program	OEPA				X			Stream and wetland restoration and preservation	http://www.epa.ohio.gov/defa/09wrrsp.aspx		\$1,000,000 but no limit	N/A	Between August and December	Through WRRSP municipalities/sewer districts borrowing money from the Ohio Water Pollution Control Loan Fund for large wastewater infrastructure projects borrow more than the cost of the project, with the extra funds directed toward an approved watershed protection or restoration project. The borrowing agency receives a .1% interest rate reduction on the loan. In Cuyahoga County, most WRRSP projects are sponsored by the Northeast Ohio Regional Sewer District.
27	CDBG Public Infrastructure & Residential Public Infrastructure Grant Program	Ohio Development Service Agency							Funds water and wastewater infrastructure	https://development.ohio.gov/cs/cs_cdbg.htm		\$500,000	At least 1:1	Accepted on continuous basis beginning in June.	Projects must serve low to moderate income areas. Must eliminate health hazard or replace functionally obsolete facility.

Trail funding Sources

New Ref. #	Funding Name	Issuing Agency	Feasib, Plan	Design, Eng	ROW, Land	Construction	Maint.	other	Project Eligibility	Website Link	Eligible Applicants	Typical Maximum Award	Local Match	Application Cycle	Notes
28	Ohio EPA 319 Grants	Ohio EPA							Correct NPS caused water quality impairment to Ohio's surface water resources. Section 319(h) implementation grant funding is targeted to Ohio waters where NPS pollution is a significant cause of aquatic life use impairments.	www.epa.ohio.gov/dsw/nps/index.aspx	Watershed groups and others who are implementing locally developed watershed management plans and restoring surface waters impaired by NPS pollution.		40% A match commitment form must be completed for EACH organization that is committing any match contributions.	Annual Application Period: Usually due in May	
29	Clean Ohio Green Space Conservation Fund	OPWC			X	X	X		Land & easement acquisition & associated restoration of wetland & riparian habitats.	District 1: http://www.pwc.state.oh.us/GSCDistrict1.html District 7: http://www.pwc.state.oh.us/		\$500,000 but no limit Up to 3 projects, each with a maximum request of	25%	October	Funds divided by District and allocated according to Census data. District 1 is Cuyahoga County, District 7 is Geauga, Ashtabula, Lake, and Portage Counties.
30	State Capital Improvement Program	OPWC				X	X		to the roadway project itself. Bike and Pedestrian Facilities that are appurtenances	http://www.pwc.state.oh.us/Infrastructure.html or http://planning.co.cuyahoga.oh.us/dopwic/		Varies by program	10%	Varies for each OPWC District but usually in the Fall of each year.	County, Township, Village, or City. Sanitary Districts, and Regional Water and Sewer Districts or http://planning.co.cuyahoga.oh.us/dopwic/
31	Local Capital Improvement Program	OPWC							Bike and Pedestrian Facilities that are appurtenances to the roadway project itself	http://www.pwc.state.oh.us/Infrastructure.html		Varies for each OPWC District but usually in the Fall of each year	0%	Varies	County, Township, Village, or City. Sanitary Districts, and Regional Water and Sewer Districts
32	The People For Bikes Community Grant Program	People for Bikes and Bike Industry Partners		X		X			PeopleForBikes Community Grant Program supports bicycle infrastructure projects and targeted advocacy initiatives that make it easier and safer for people of all ages and abilities to ride.	http://www.peopleforbikes.org/pages/grant-guidelines	Non-profit organizations and local governments		Although a specific percentage match is not required, leverage and funding	Biannual Application Period: Online Letters of Interest Due January & August	
33	Robert Wood Johnson Foundation Grants	Robert Wood Johnson Foundation							The Robert Wood Johnson Foundation provides grants for projects in the United States and U.S. territories that advance our mission to improve the health and health care of all Americans	http://www.rwjf.org/en/grants/what-we-fund.html	public agencies, universities, and public charities that are tax-exempt under section 501 (c)(3)			RWJF awards most grants through calls for proposals (CFPs) from time to time. The Pioneer Portfolio accepts unsolicited proposals for projects that suggest new and creative approaches to solving health and health care problems at any time and issues awards throughout the year.	
34	Rockefeller Foundation Grants	Rockefeller Foundation		X		X			The Rockefeller Foundation works to spread the benefits of globalization to more people in more places around the world. Funding inquiries must fit within four core issue areas: Advance Health, Revalue Ecosystems, Secure Livelihoods & Transform Cities. Within the Transform Cities issue is a focus on pushing the U.S. over the tipping point toward transportation planning and infrastructure policy that serves the needs of 21st century America.	http://www.rockefellerfoundation.org				The Rockefeller Foundation will consider on line inquiries for funding projects that must fit within four core issue areas and one or more of their initiatives.	
35	Duke Energy	Duke Energy Foundation							Community Impact, Early Childhood Literacy, Environment, STEM, Urban Revitalization, Workforce Development	https://www.duke-energy.com/community/duke-energy-foundation/online-grant-application	501 (c) 3, Government entity, complete on-line eligibility quiz			Environment: July - August	
36	Local Community Development Grants	Duke Energy Foundation							Local Community Development	https://www.duke-energy.com/community/duke-energy-foundation/online-grant-application	501 (c) 3, Government entity, complete on-line eligibility quiz	Max \$10,000		Ongoing	
37	Appalachian Region Commission	ARC							Natural and Cultural Assets - priorities are education and project wit significant impact on local economy	https://www.arc.gov/funding/ARCGrantsandContracts.asp	501 C and gov agencies serving Appalachian Counties		Generally 50%	Ongoing	