

# Rumpke Recycling FAQs

## PREPARATION

**How clean should the material be?** Rinse out all recyclables.

**If the material is wet, is it still acceptable?** Dry material is always preferred because Rumpke is able to process and market the material better. Please try to keep all materials inside your recycling container. If the materials get wet, Rumpke can still process them.

**Which containers should be flattened/crushed?** We recommend crushing cans to make space in your bin. It's also best to release the air out of plastic number one bottles and then reattach the lid. This helps with the sorting process.

**Containers lids – Can they be recycled? On or off?** Both metal and plastic lids can be recycled. Please leave them on all bottles and jars.

## PAPER PRODUCTS

**Can shredded paper be recycled?** Yes, if it is placed in a clear plastic bag. This is the only exception to the “no plastic bag” rule.

**Are brown paper towels acceptable?** No

**Spiral notebooks or spiral tablets?** No, only if the spiral binding is removed.

**Thermal bonded paper?** No

**Paperback books and hardback books?** Paperback books are recyclable. Hardcover books are not acceptable, but the interior pages can be removed and recycled.

**Paper cups, paper plates, paper towels & napkins?** No, these materials are contaminated with food.

**Post-it notes?** Yes

**Magazines?** Yes

**Photographs and “sticker paper?”** No, this type of paper and adhesive used contaminates the recycling process.

**Laminated paper?** No

## PRODUCT PACKAGING

**Pizza boxes?** Pizza boxes should be completely empty with the liner and plastic “table” removed. If it is very greasy and/or covered with sauce and cheese, it should be thrown away. If the lid is fairly clean, tear it off and recycle what you can.

**Pet food bags?** No

**Paperboard dishwasher detergent boxes with metal spouts?** The cardboard is recyclable, please remove the metal spout.

**Frozen concentrated juice containers?** No

**Wine boxes?** Yes, but the interior plastic bag should be thrown away before recycling.

**Paper egg cartons?** Paper egg cartons are acceptable, but Styrofoam egg cartons are not.

**Keurig cups?** No

**Plastic coffee cans?** Yes

**Are the large plastic containers of salad dressing, mayo, mustard, ketchup, etc. used commercially acceptable?** Yes

**Vegetable oil bottles?** Yes, if rinsed well.

**Clamshells?** No

**Plastic containers of infant formula?** Yes

**Protein powder containers?** Yes

**Take-out containers?** No

**Toothpaste tubes?** No

## SHIPPING MATERIALS

**Shrink wrap?** Not in Rumpke's residential program.

**Is Styrofoam acceptable in Rumpke's program? If not, are there places to take it where it will be recycled?** No, it is not acceptable in Rumpke's program. We recommend that you take Styrofoam peanuts back to UPS or FedEx Stores.

**Amazon mailers?** The plastic liner cannot be included.

**Envelopes with windows?** Yes

**Amazon “pellets” used for padding?** No, they are Styrofoam and cannot be processed.

**Plastic “pillows” used to secure items being shipped?** No, they are not a plastic container.

**Molded fiber used in packaging?** Molded Fiber is fine. Tyvek is not accepted.

**Climacell boxes?** All Styrofoam and cooling components need to be removed, leaving the Corrugated box only.

**Are corrugated pallets acceptable?** Yes, please break them down into 6ft by 6ft pieces.

**Is cardboard that has been painted acceptable?** Yes, if the paint is minimal.



[www.rumpke.com](http://www.rumpke.com) | 1-800-828-8171



# Rumpke Recycling FAQs

## SHIPPING MATERIALS (CONTINUED)

**Should tape be removed from corrugated boxes?** If possible, but it is not necessary.

**Will corrugated boxes be picked up if they are outside of the recycling container?** Yes, please break them down into 6ft by 6ft pieces. Place the loose boxes near your recycling bin for pick up.

**Should corrugated boxes be “bundled” for curbside recycling and if so with what?** Simply break down your boxes into 6ft by 6ft pieces and pile them next to your recycling container. Do not bundle the boxes together.

## GLASS

**Can broken glass be placed in a recycling container?** No

**Glass bottles that contained essential oils?** No

**Olive oil bottles?** Yes

**Peanut butter jars (glass)?** Yes, if rinsed well.

**Makeup bottles?** Yes, if rinsed well.

**Perfume bottles?** No

**Window glass, mirrors or drinking glasses?** No

## CANS & PANS

**Are disposable aluminum pans and aluminum foil acceptable?** No

**Pet food cans?** Yes, but please make sure they are rinsed out.

**Aerosol cans?** Yes, as long as the can did not contain household hazardous waste. The can should be empty. Please remove the spray nozzle and lid. Spray paint cans are not accepted.

**Shaving cream in aerosol cans?** Yes

**Large metal cans such as popcorn cans?** Yes

**Metal whipped cream chargers?** No

## BOTTLES & JARS

**Plastic bottles with labels that are “shrunk” on the container?** Yes

**Plastic bleach bottles and other bottles of household cleaning products?** If the product’s label identifies it as household hazardous waste, it is not acceptable.

**Plastic containers of disinfecting wipes?** Yes

**Plastic bottles of hand sanitizer?** Yes

**Over the counter medicine bottles?** Yes, but if the bottle is small it may not be recovered.

**Reusable plastic water bottles?** No

**Peanut butter jars?** Yes, if well rinsed.

**Body lotion?** Yes

## OTHER MATERIALS

**PVC pipe?** Not in Rumpke’s residential program.

**How can I properly dispose of a smoke alarm?**

Check with your local fire department or solid waste management district for suggestions.

## RUMPKE PROCESSES

**Is recyclable material retrieved at landfills?** No

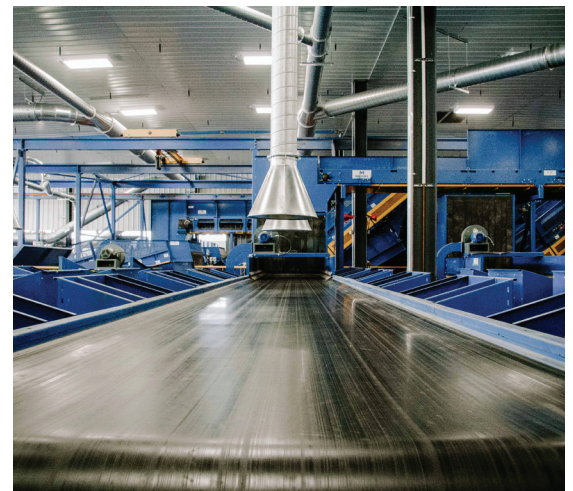
**What are end products?** Processed recyclables used to make new products.

**Are Rumpke drivers empowered to refuse to pick up unacceptable items?** Yes

**Do recycling guidelines differ if the business or municipality has a compactor?** The guidelines do not differ. In most service areas, recyclers have collaborated to create a consistent list of acceptable items.

**Does Rumpke incinerate material?** No

**Does Rumpke make money on recycling?** Recycling markets go up and down every month. Rumpke is dedicated to recycling in good markets and bad.



[www.rumpke.com](http://www.rumpke.com) | 1-800-828-8171



Recognizing private company success